

DIAGRAM 2-20

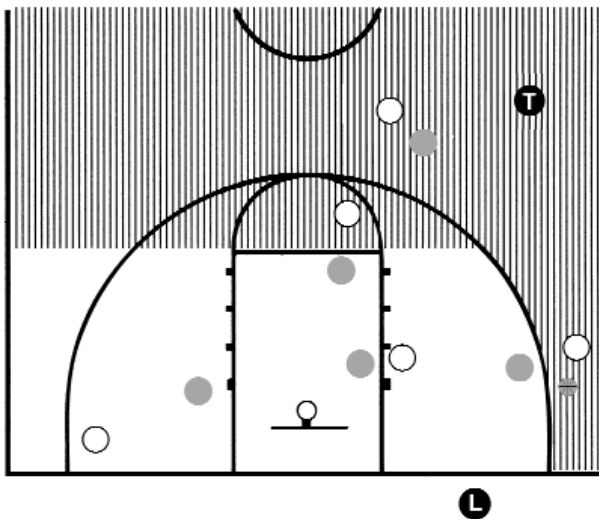
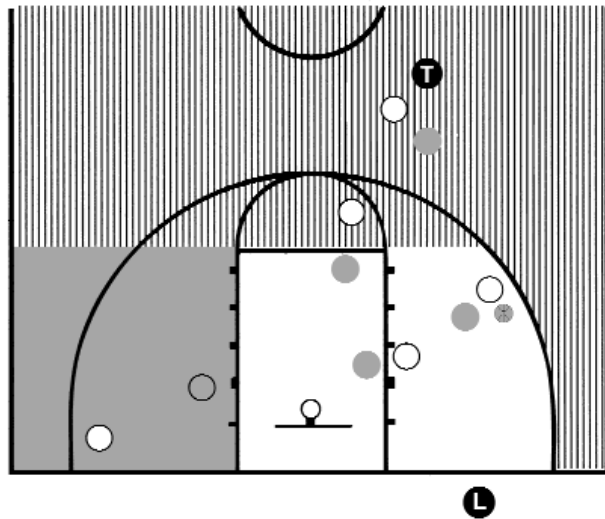


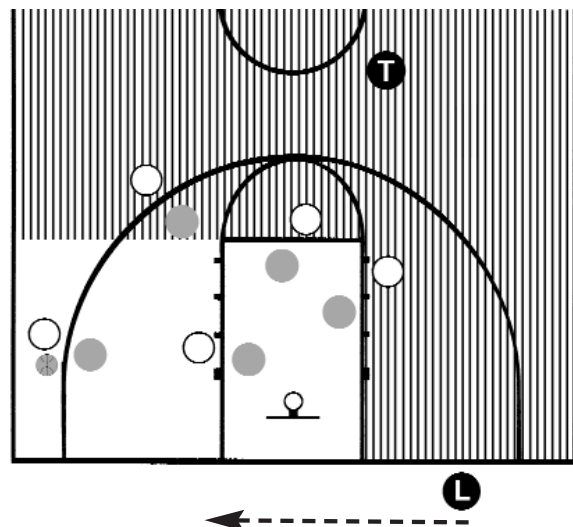
DIAGRAM 2-21



from the Trail side of the court.

5. When the Lead moves across the lane, the Lead's PCA is extended to include the area inside the arc. See Diagram 2-20.
6. When the ball moves inside the three-point arc, the Lead is now on-ball and the trail must extend coverage to assist with the open area on the opposite side. See Diagram 2-21.

DIAGRAM 2-22



7. If the majority of players or the ball swings back to the opposite side, the Lead should begin to quickly move back across the lane to cover the play. See Diagram 2-22.
8. If there is a quick shot or drive to the basket and the Lead is still on the same side of the court as the Trail, the Lead should close down to the near lane-line extended and officiate rebounding action.
9. If a transition to the other end of the court occurs when the Lead is ball-side, the Lead must remember to go back to the other side of the court and into diagonal coverage.

2.3.4 Shots and Rebounding:

A. Coverage:

1. Each official is responsible for all shots in his/her PCA.
2. If a shot is taken near an area where coverage intersects, the secondary official should be prepared to assist.